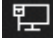




Ethernet Port Setup for DTS Devices (Windows 10)

BRIEF STEPS, IP ADDRESSES, EXAMPLES

JOHN MOORS

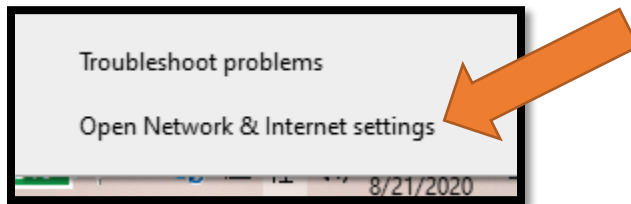
1. At the bottom far right of your taskbar, you should see the icon for internet connections. In this example, we see the Ethernet icon: 



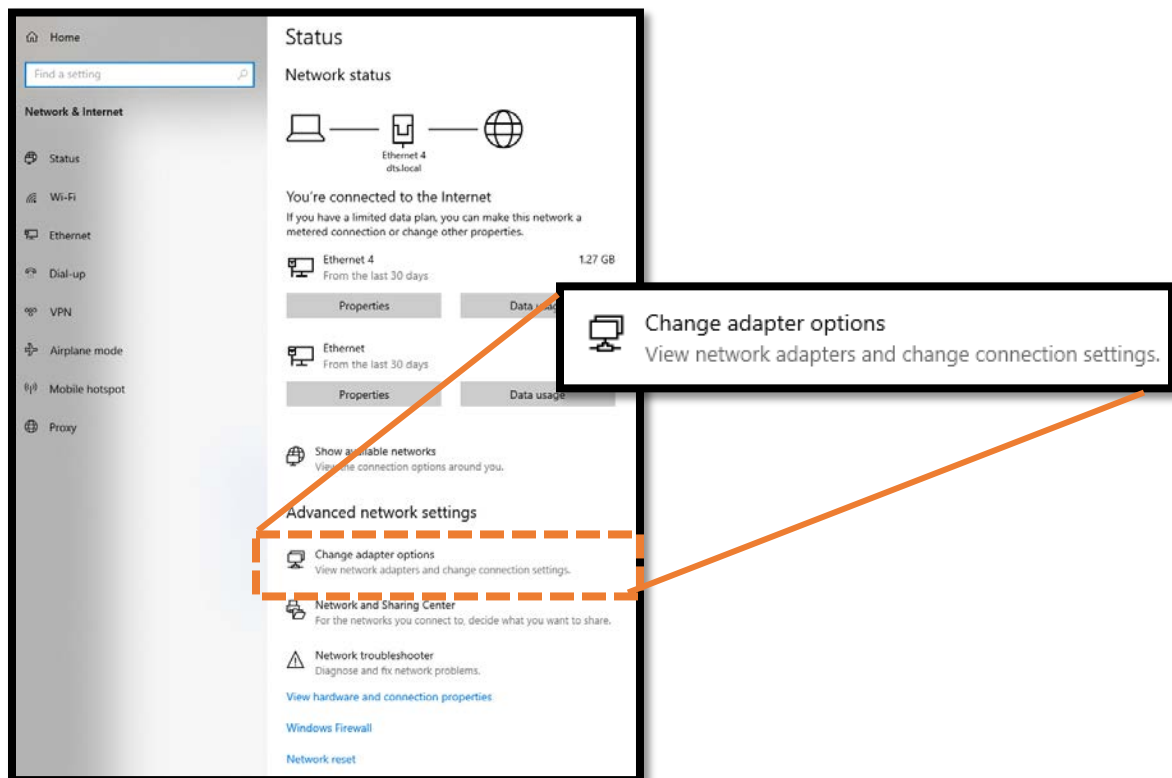
Note: It may also appear as one of the following icons:



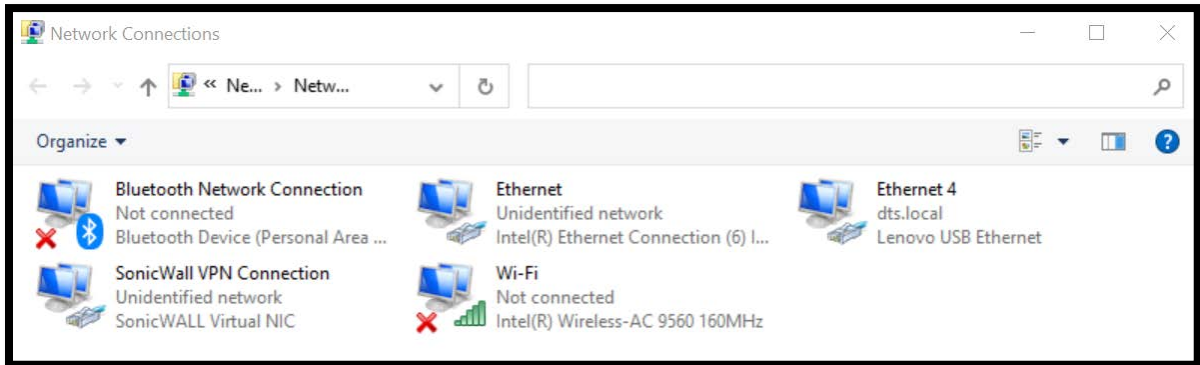
2. Right-click this icon, and you will see two options. Left-Click the "Open Network & Internet settings" button.



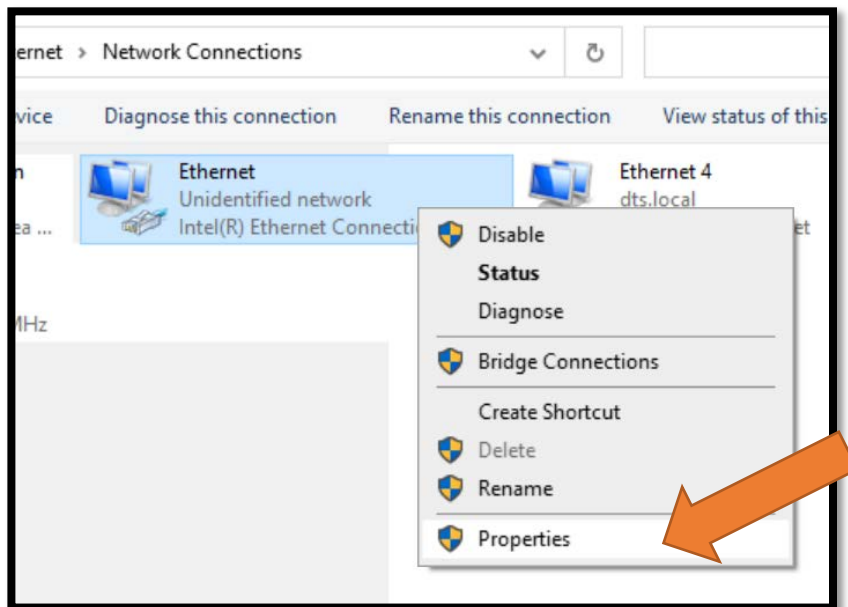
3. A larger screen will appear with overall settings. Left-Click the "Change adapter options" button shown below.



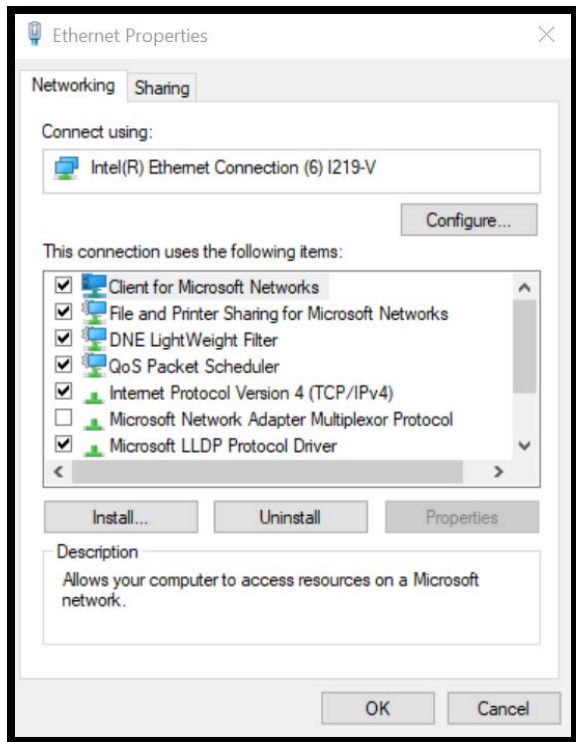
- This will bring you to a window that shows your available connections. Those connections will vary based on your setup.



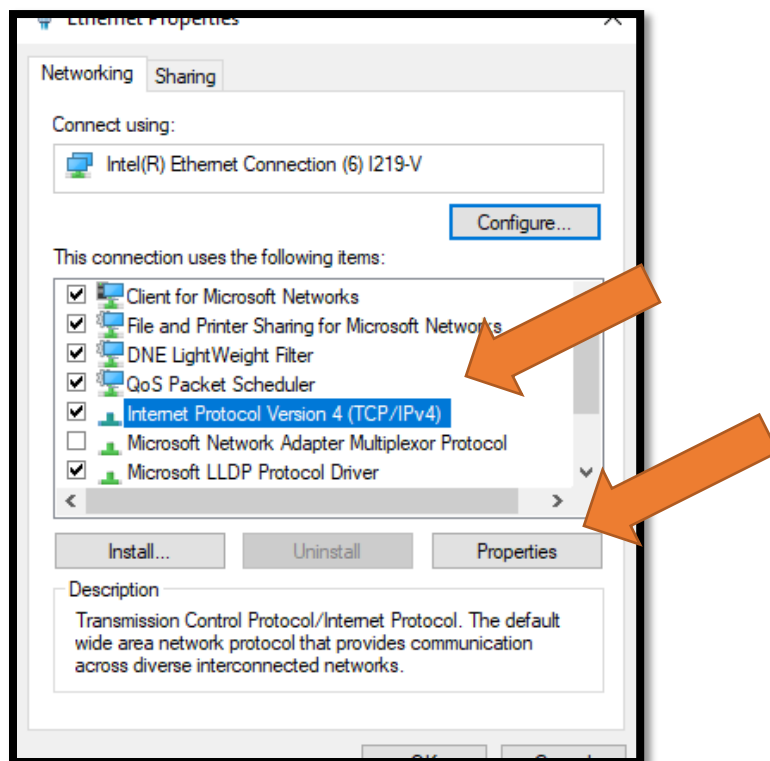
- Right-Clicking your current connection will activate a new window with options. Left-Click the Properties button at the very bottom.



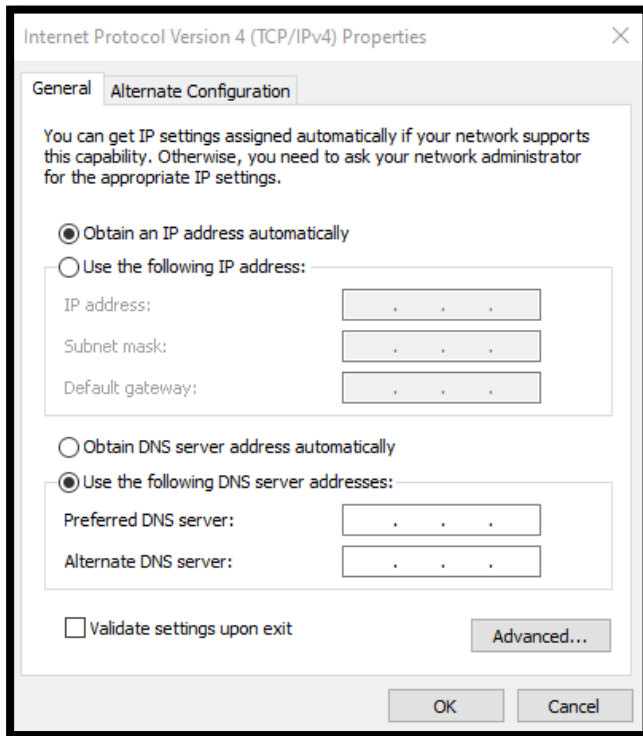
6. The Ethernet Properties window will appear.



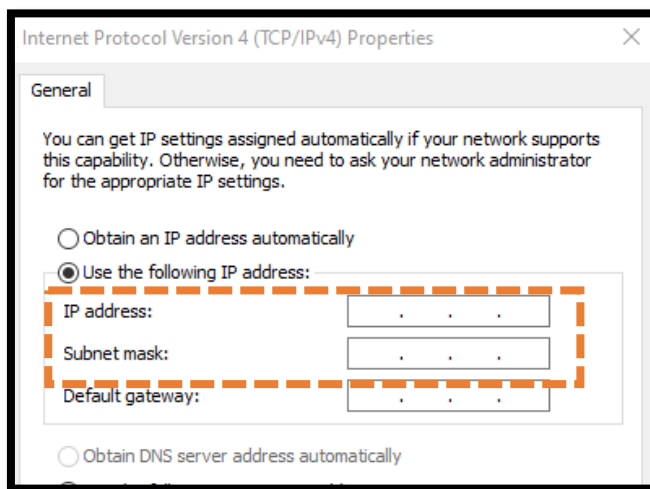
7. Left Click on the “Internet Protocol Version 4 (TCP/IPv4)”. This will activate the “Properties” button, which you can click next to open up the Properties window.



8. Once you've clicked Properties, a new window will appear:



9. Click the "Use the following IP address:" option and fill out the **IP Address** and **Subnet Mask** fields.
- Depending on the unit you are setting up, the user manual will describe what needs to be input into these two fields.



10. The Help Center has a breakdown of defaults for these two fields which can be accessed here: [DTS Default IP Addresses](#)

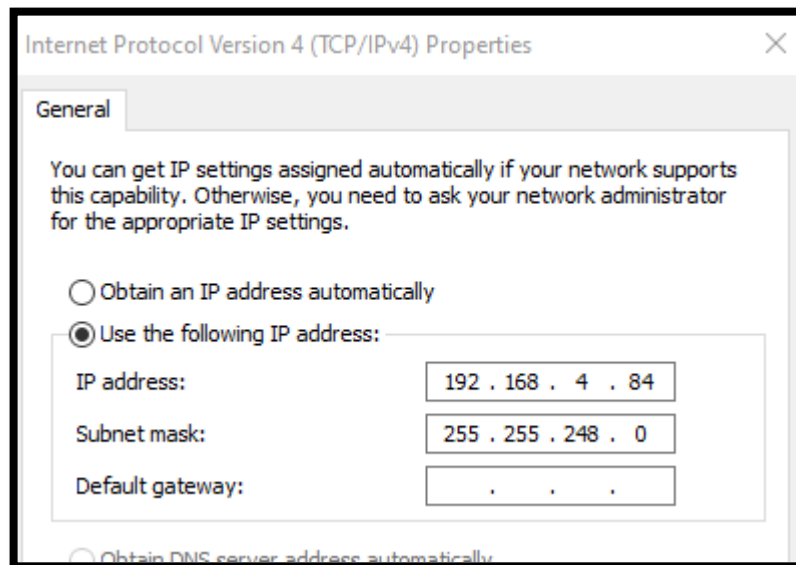
HARDWARE	DEFAULT IP	NETMASK	NOTE
TDAS Pro Rack	192.168.1.xx	255.255.255.0	1
TDAS G5	192.168.1.xx	255.255.255.0	1
SLICE DB	192.168.1.2xx	255.255.252.0	1,2,3
SLICE PRO Ethernet	192.168.0.xx	255.255.252.0	1,2
SLICE6 AIR	192.168.4.xx	255.255.248.0	1

¹ Where xx is the last two digits of S/N

² Default internal DTS IP 192.168.1.208

³ As of 2015-09, these will ship as 192.168.0.xx

- a. Example: If the SN of a SLICE6 AIR was S6A00085, the default IP would be 196.168.4.85, and the PC's IP Address search should precede those final two digits. A possible starting point could, therefore, be 196.168.4.**84**, depending on your network setup and which IPs were already in use. In that example, the fields inputs would be:



11. Once the Appropriate settings have been input, click OK at the bottom of the window and close out of those property windows. Assuming no other port/security/network challenges exist at your facility, your PC should now be able to communicate with the DTS ethernet device.